



Neighbourhood Planning: An Introduction

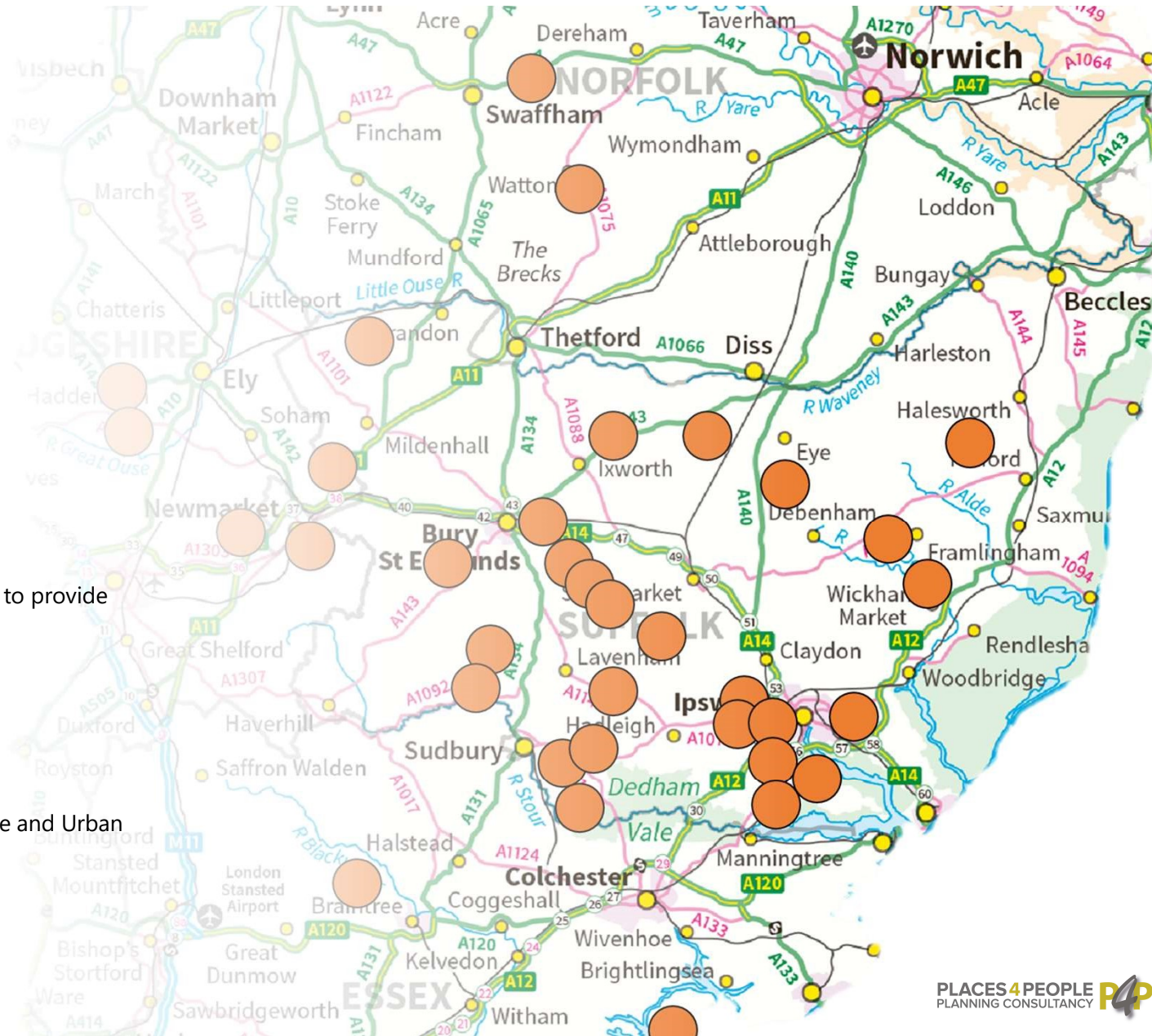


About Places4People Planning Consultancy

- Established in 2015
- Specialising in Neighbourhood Plan preparation
- Six Plans complete
- A further six at referendum this year
- Retained by South Cambridgeshire and Thanet Councils to provide Neighbourhood Plan support

About me

- Former local government Planning Manager
- Responsible for Planning Policy, Conservation, Landscape and Urban Design Team
- Spells as Head of Planning
- International Cycle Race Commissaire (referee)
- British Cycling Tutor





Background



The Rules

- Cannot plan for less development than in the Local Plan
- Must conform with national and strategic local planning policies
- Must follow Government Regulations
- They're subject to Independent Examination; and
- Public Referendum



The Process





How they're prepared



The Detail

- You need to involve the community
 - Take them with you
 - Keeping them engaged and informed
 - Don't take things for granted
 - Aiming for the YES vote at the end of the process
- Plan must be based on evidence
 - Evidence gathering needed before Plan can be written
 - Not collecting information for the sake of it

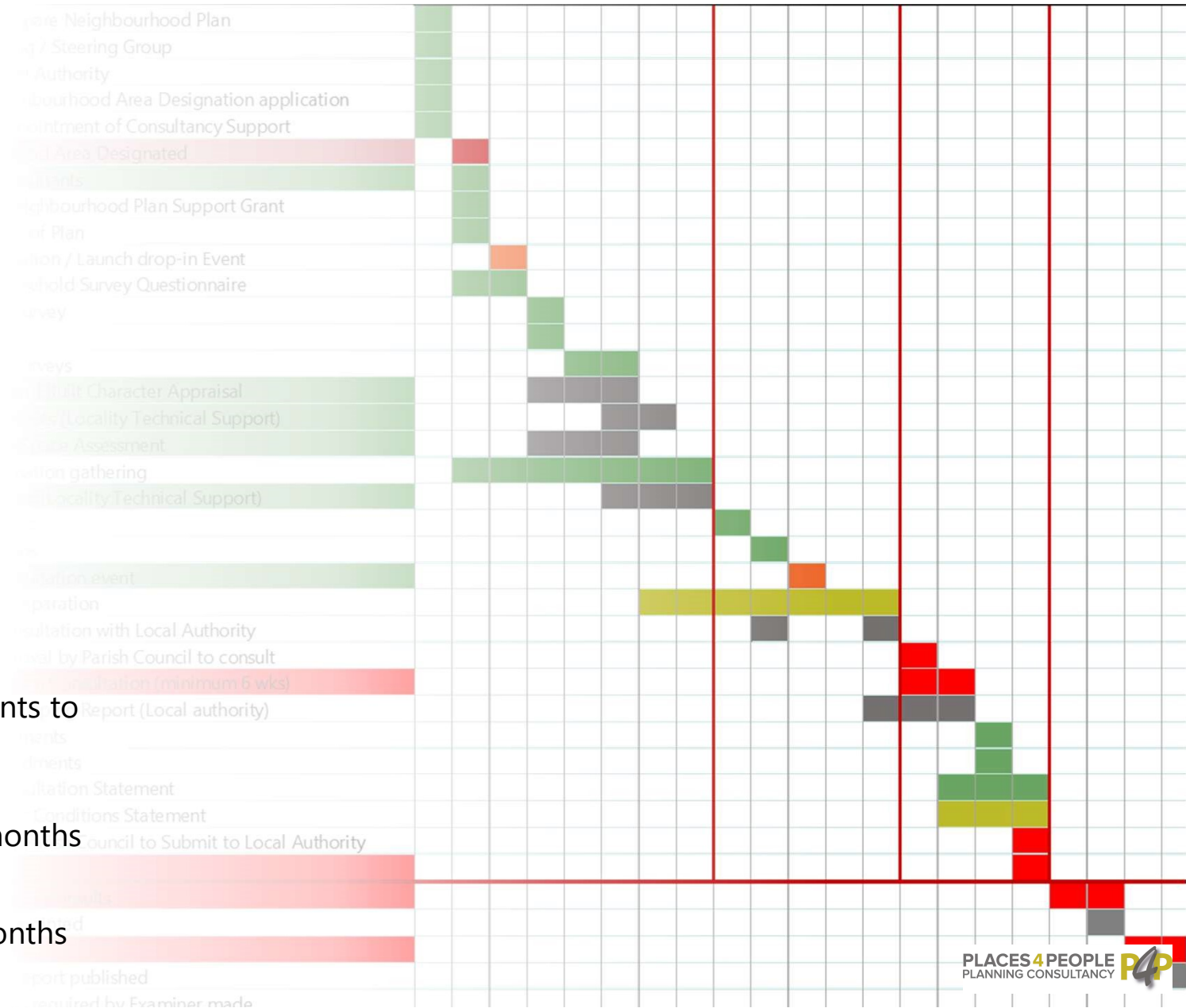


The Project

1. Information Gathering
2. Identify Issues
3. Agree Options
4. Consult on Options (if necessary)
5. Write the Plan
6. Consult on the Plan
7. Submit it and supporting documents to District Council

• Average time to get to here = 24 months

• Post-submission takes around 6 months



The Plan

1. Generally covers the whole parish
2. Is a professional and legal document
3. Contains planning policies for things that need planning permission
4. Is backed up by evidence
5. Is not “War and Peace”





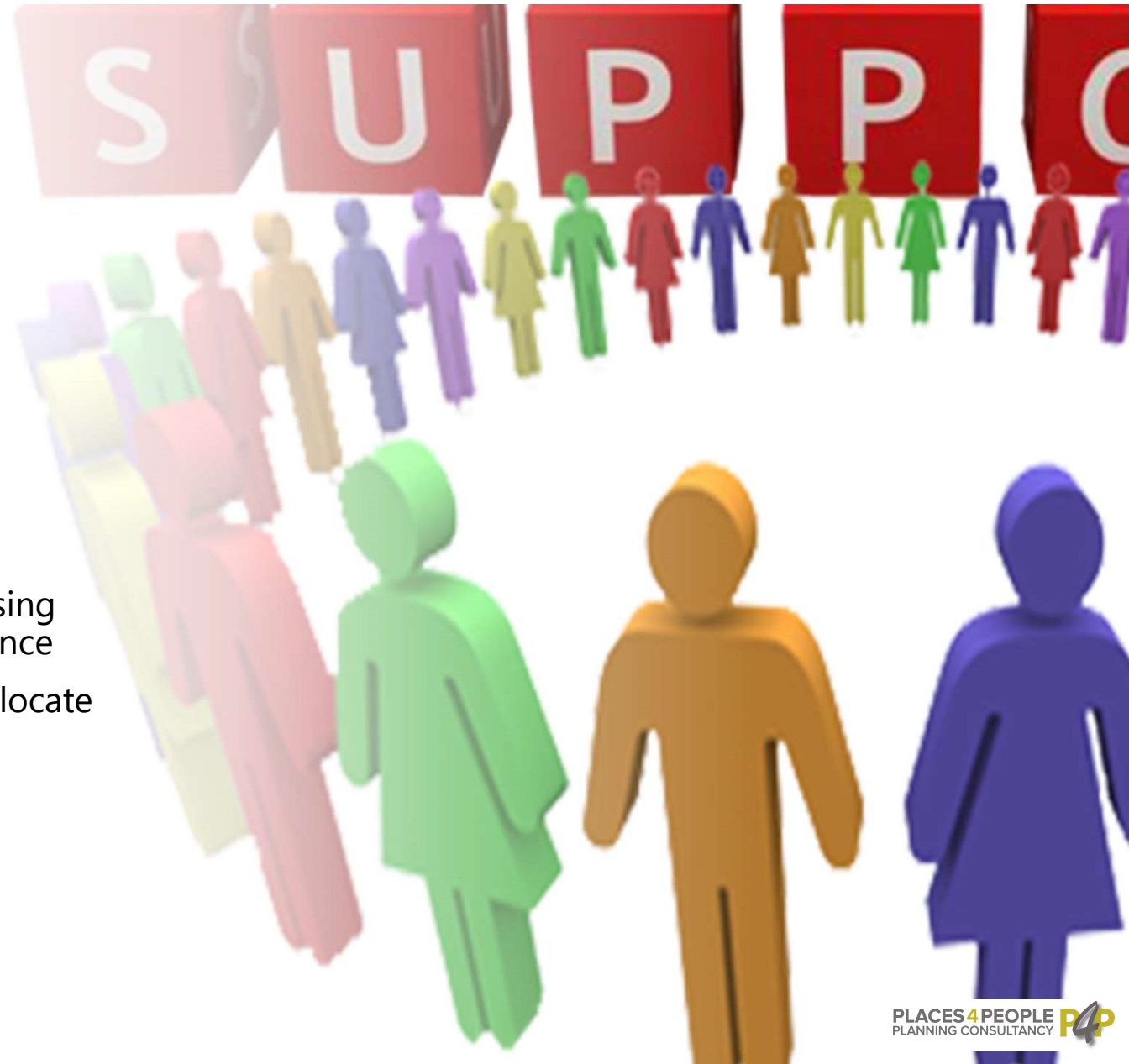
Help is
available



You're not on your own

1. Local authority has to support
2. Government grants available *
 - Up to £10,000 to cover costs
 - Free "technical support" such as Housing Needs Assessment and Design Guidance
3. Additional grant of up to £8,000 if you allocate a site for housing and/or include design guidance in the Plan

* Correct for 2020/21 Financial Year



Getting started



Step by step

1. Decide if you're going to do a Plan
2. Get a small group of volunteers (max 10 appears to work best)
 - Parish Council representation but community too
3. Apply to Local Planning Authority to designate the parish as a Neighbourhood Area
4. Consider appointing professional support



What next?

1. Fee Proposal
2. Apply for grant in April
3. Publicity / website
4. Decide what the Plan will cover
5. Household Survey
6. Other information gathering

